

Questions? Contact us!

The Bellevue Hospital
419.484.5475

To view your medical information, log in at:
<https://bellevuehospital.followmyhealth.com>



Information at your fingertips.

Accessing your health information is
easy with FollowMyHealth.

See a quick health summary, send messages,
make appointments, and so much more.



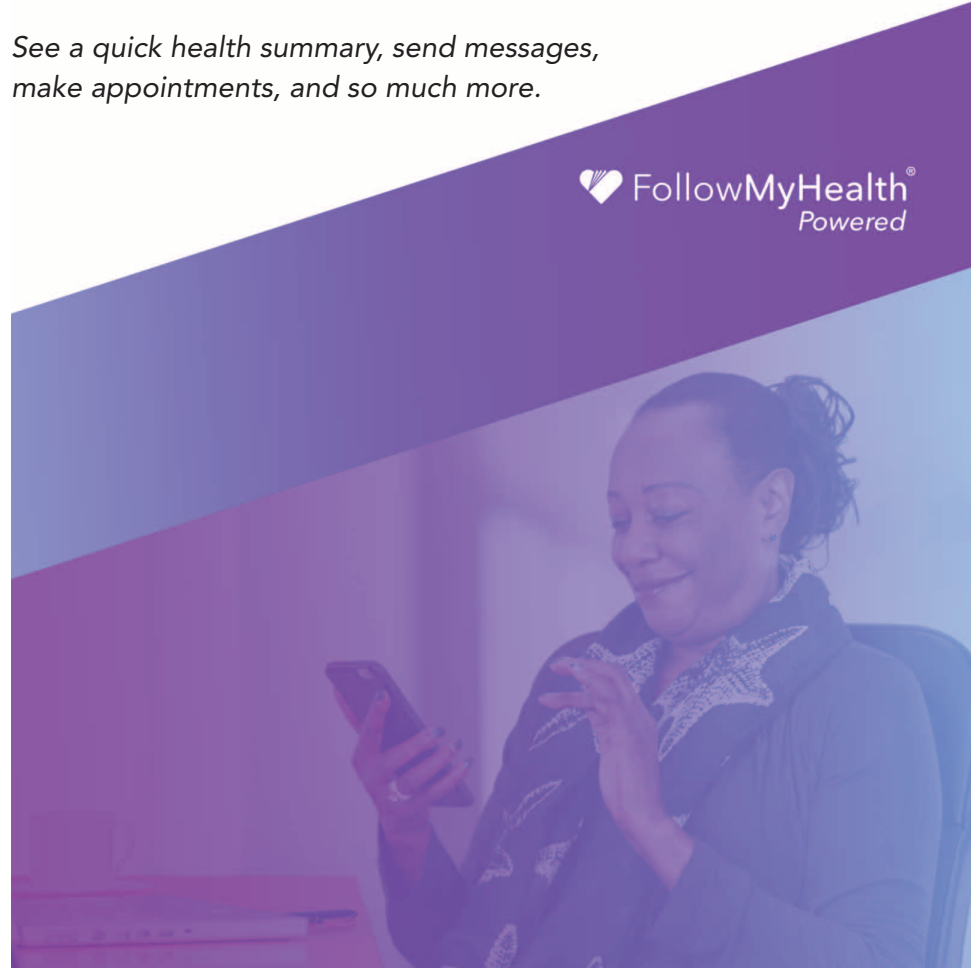
Download the FollowMyHealth app:
Search FollowMyHealth and log in
with your username and password.



*Our portal is for non-emergency
routine needs only. If you need an
immediate response, call 9-1-1.*

Apple and the Apple logo are trademarks of Apple Inc., registered in the U.S. and other countries. App Store is a service mark of Apple Inc., registered in the U.S. and other countries.
Google Play and the Google Play logo are trademarks of Google Inc.

Form No. 4077



With FollowMyHealth, you can:



Check your personal records anywhere, anytime, using a computer, smartphone or tablet.



Make more informed health decisions for you and your family.



Save valuable time with online communication and scheduling tools.



Manage your entire family's healthcare in one spot.

Here's how to get started:

1. Make sure we have your correct email address to send you an invitation.
2. Click the registration link in the email you receive from noreply@followmyhealth.com.
3. Create your portal login using a unique username and password.
4. Enter the invitation code provided by us in the email and click "Agree" on the release of information.

Already have a FollowMyHealth account?

Click the link in your invitation email and log in with your existing account. This will keep all of your health information in one place.

